



Concelo.  
entro™

THE ART OF EFFORTLESS WASTE MANAGEMENT  
MEETS THE ENGINEERING BEHIND EVERY MOVEMENT





Concelo entro™ is the perfect pairing of Concelo's state-of-the-art waste management and Blum's world-class drawer technology. Designed to integrate seamlessly into Blum drawers, it offers effortless cleanliness, controlled odours and moisture, and a precise, fluid closing motion.

## Concelo

- The best in waste management, with its award winning easy clean system and active lid technology.

Colour matched to Silk White and Orion Grey, it blends beautifully with your kitchen design while maintaining consistent drawer performance and streamlined assembly. The System 32 drilling pattern ensures easy installation.

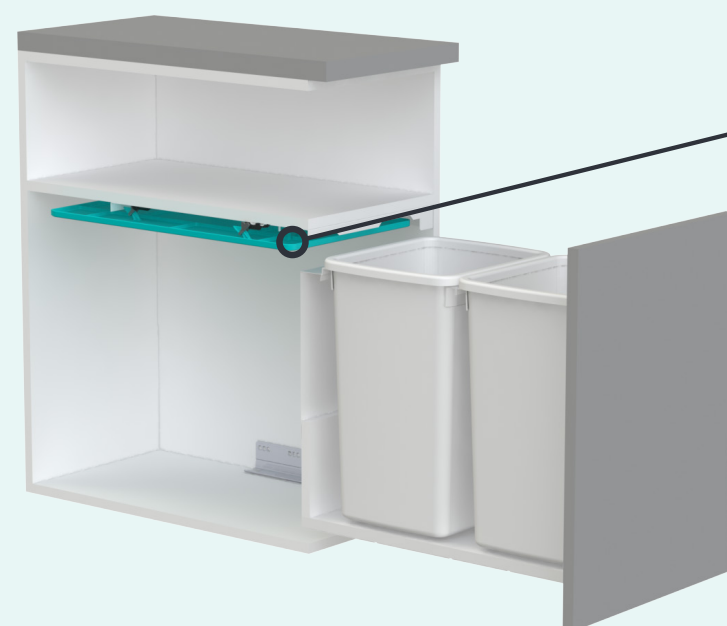
## entro

- Meaning within, signifying seamless integration.

## INTELLIGENT ODOR CONTROL WITH ACTIVE LID TECHNOLOGY

### TACKLE ODOURS AND MOISTURE WITHOUT LIFTING A FINGER

- Hidden Active Lid – Drops down over the buckets when the drawer closes, trapping in odours and moisture –no need to remove a lid from your bin.
- Hands-Free Design – The lid moves in harmony with the opening and closing action of the drawer, allowing for a hands-free waste disposal experience.
- Easy Maintenance – A clever lid tool to allow quick removal for cleaning and re-installation.



Active Lid drops down over the buckets when the bin is closed.

**No more dirt traps!**  
Clip'n'Clean components allow easy access to clean between the bin frame and door front.



*Concelo entro - the perfect pairing of state of the art waste management inside Blum's world-class drawer technology.*

## CLIP'N'CLEAR SYSTEM

Keep your bin looking and smelling fresh with effortless removal and cleaning. The unique Clip'n'Clean System creates an easy cleaning process in just 3 simple steps:

- 1 Effortless removal
- 2 Wash in warm soapy water
- 3 Reinstallation within moments



kitchen



commercial



recycle

Scan to watch  
Active Lid and Easy  
Clean Technology



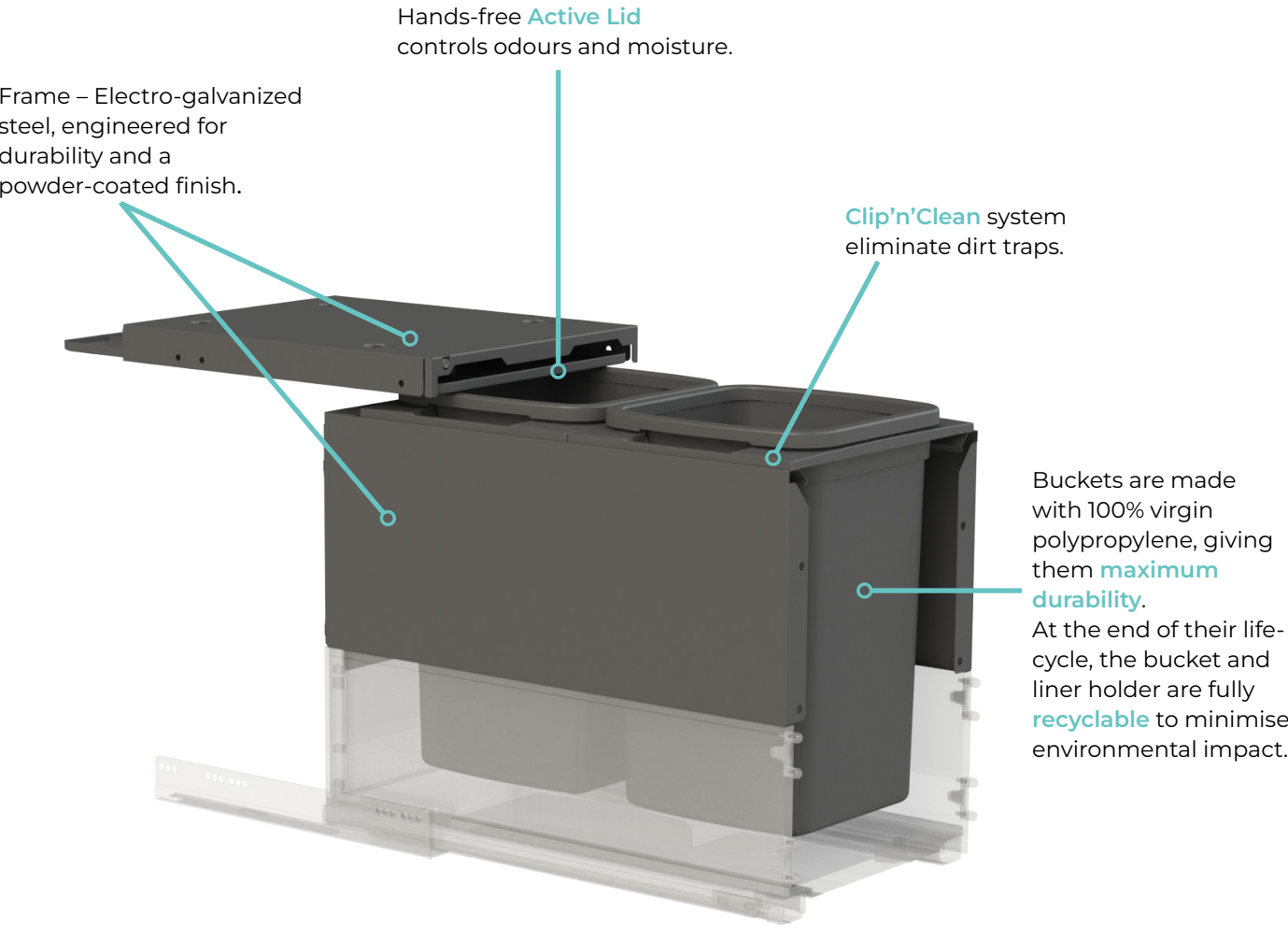
SCAN ME

PATENT PENDING: [concelo.com/ip](https://concelo.com/ip)

# FEATURES OF CONCELO ENTRO

Compatible with Tip-on-Blumotion and Servo-drive to provide a true hands-free waste system.

Concelo entro bin is perfectly flush size for seamless integration with Blum drawers. Designed to suit 550mm drawers to allow easy access to rear bucket.



## Easy Installation

The Concelo entro bin system is supplied with drilling templates and uses system 32 drilling for complete compatibility with Blum drawers.

Watch the installation animation to see the simple bin assembly.



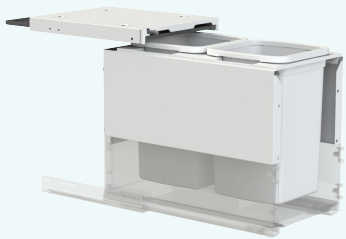
SCAN ME



For Concelo entro System

## Concelo entro for Blum LEGRABOX

For C Height 550mm Drawers Only  
Designed for standard width cabinets using 16mm board.

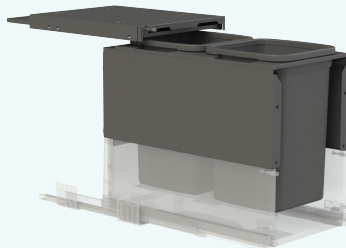


CE-350-216 [BL] - SW

Cabinet Width	Bucket Configuration	Dimensions (WxHxD) mm	Orion Grey Model	Silk White Model
350mm	2 X 13L	318 x 385 x 555	CE-350-213[BL]-OG	CE-350-213[BL]-SW
	2 X 16L	318 x 481 x 555	CE-350-216[BL]-OG	CE-350-216[BL]-SW*
400mm	2 X 15L	368 x 385 x 555	CE-400-215[BL]-OG	CE-400-215[BL]-SW
	2 X 20L	368 x 481 x 555	CE-400-220[BL]-OG	CE-400-220[BL]-SW
450mm	2 X 15L	418 x 385 x 555	CE-450-215[BL]-OG	CE-450-215[BL]-SW
	2 X 20L	418 x 481 x 555	CE-450-220[BL]-OG	CE-450-220[BL]-SW

## Concelo entro for Blum MERIVOBX

For E Height 550mm Drawers Only  
Designed for standard width cabinets using 16mm board.



CE-350-216 [BM] - OG

Cabinet Width	Bucket Configuration	Dimensions (WxHxD) mm	Orion Grey Model	Silk White Model
350mm	2 X 13L	318 x 369 x 555	CE-350-213[BM]-OG	CE-350-213[BM]-SW
	2 X 16L	318 x 497 x 555	CE-350-216[BM]-OG*	CE-350-216[BM]-SW
400mm	2 X 15L	368 x 369 x 555	CE-400-215[BM]-OG	CE-400-215[BM]-SW
	2 X 20L	368 x 497 x 555	CE-400-220[BM]-OG	CE-400-220[BM]-SW
450mm	2 X 15L	418 x 369 x 555	CE-450-215[BM]-OG	CE-450-215[BM]-SW
	2 X 20L	418 x 497 x 555	CE-450-220[BM]-OG	CE-450-220[BM]-SW

\* Pictured Models

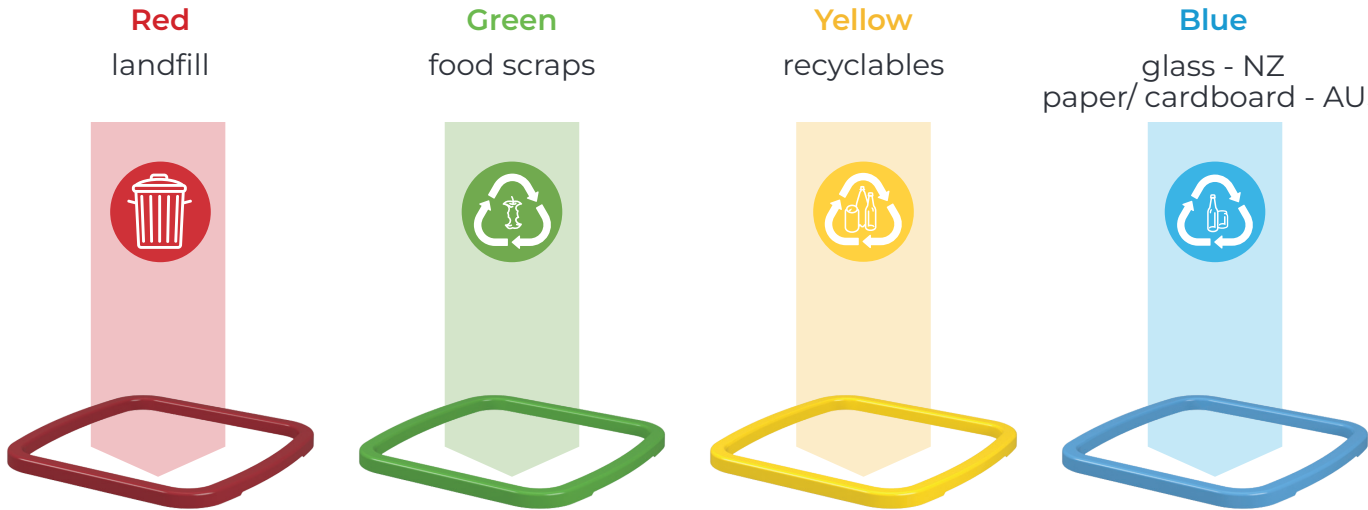


COLOR-CODED  
CONVENIENCE FOR  
SMARTER RECYCLING

Simplify waste sorting with Concelo entro. Create a seamless, sustainable waste management system with colour-coded liner holders.

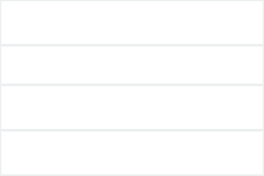

- Easily distinguish waste and recycling streams with vibrant colour-coded holders.
- Compatible with Concelo entro buckets – 13L, 15L, 16L, 20L.
- A smart, separate accessory – Available for individual purchase to enhance your waste system.

See page 7 for accessory details.





Concelo entro  
Bin Accessories

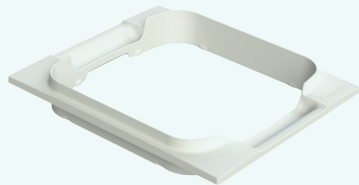


Buckets			
Size	Colour		Dimensions (WxHxD) mm
13L			246 x 290 x 246
15L			279 x 290 x 243
16L			246 x 375 x 246
20L			279 x 395 x 243

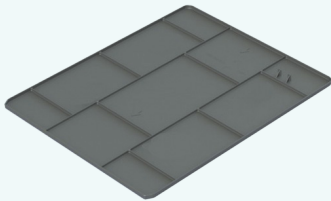
Liner Holders			
Size	Colour		Dimensions (WxHxD) mm
13L & 16L			250 x 15 x 248
15L & 20L			283 x 15 x 247



Clip'n'Clean Trays			
Model	Size	Colour	Dimensions (WxHxD) mm
CE350	13L & 16L		294 x 43 x 250
CE400 - CE450	15L & 20L		343 x 43 x 250

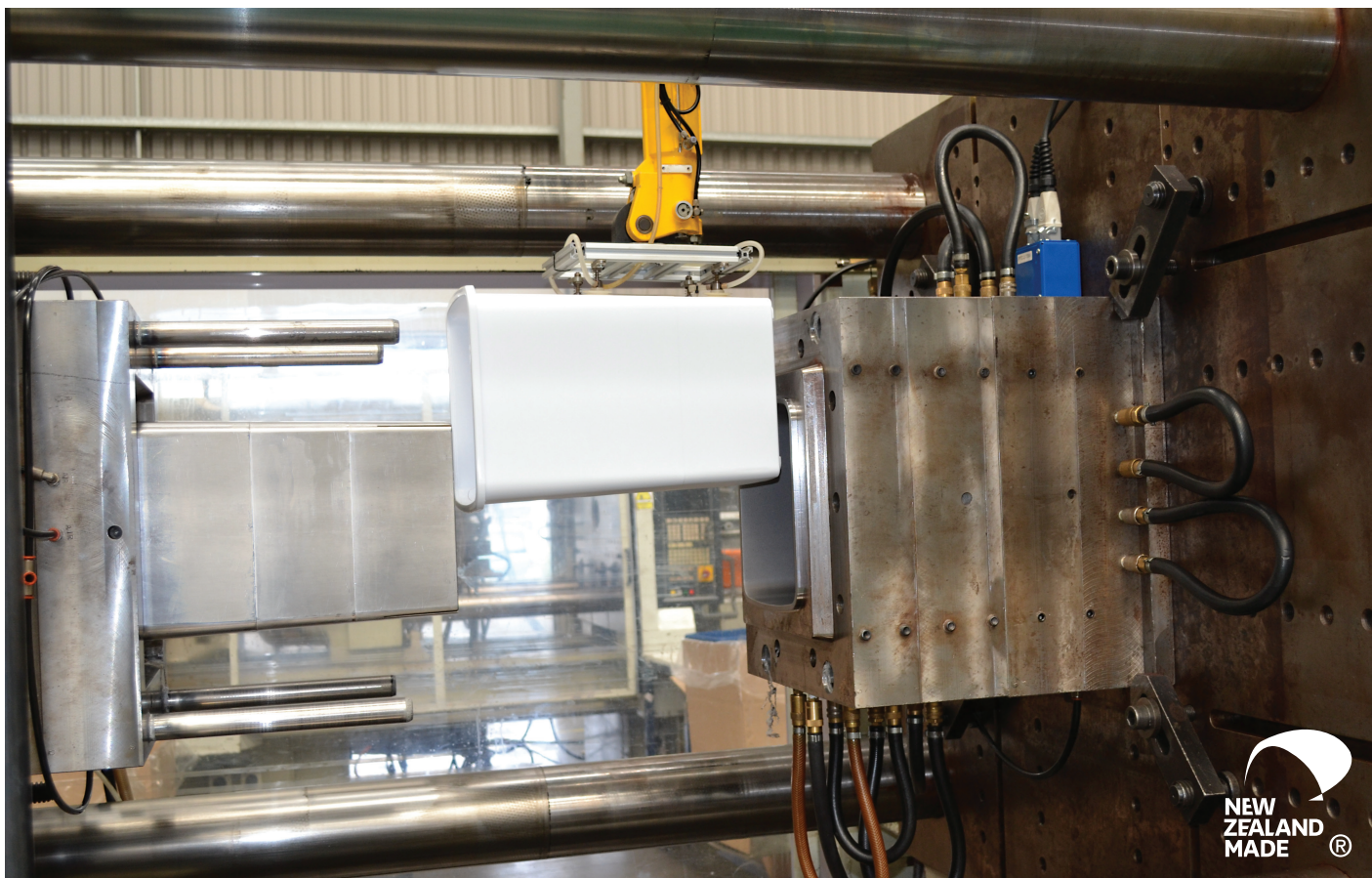


Active Lid		
Size	Colour	Dimensions (WxHxD) mm
CE350 / CE400 / CE450		296 x 21 x 504



Lid Release Tool	
Code	Dimensions (WxHxD) mm
CRART	60 x 30 x 8





## CRAFTED IN NEW ZEALAND FOR SUPERIOR QUALITY

The Concelo entro system is proudly designed and manufactured in New Zealand by Hideaway Bins, the leader in premium waste management solutions.

With a commitment to precision engineering and durable materials, every component is crafted for long-lasting performance, seamlessly integrating into modern spaces. Partnering with New Zealand's top manufacturers, Hideaway Bins ensures exceptional quality in every detail.

Each bin is expertly assembled in Silverdale, Auckland, undergoing rigorous quality control to guarantee

reliability and excellence – because when it's made in New Zealand, by Hideaway Bins, it's made to last.

### Manufactured by Kitchen King Ltd

#### Home of Hideaway Bins

44 Anvil Road, Silverdale, Auckland, 0932

New Zealand

Phone: 09 426 7456

[info@hideawaybins.co.nz](mailto:info@hideawaybins.co.nz)

For more information visit: [hideawaybins.co.nz](https://hideawaybins.co.nz)

## HOW TO ORDER

### Our National Distributors:



[blum.com/nz](https://blum.com/nz)  
09 820 5051



[hafele.co.nz](https://hafele.co.nz)  
0800 4 HAFELE (442 3353)

### Our Regional Distributors:



[carters.co.nz](https://carters.co.nz)  
0800 CARTERS(227 8377)



[impeys.co.nz](https://impeys.co.nz)  
0800 146 739



[industryhq.co.nz](https://industryhq.co.nz)  
06 952 4638

Concelo entro is designed and manufactured in New Zealand. Kitchen King® Limited reserve the rights to this brochure under copyright law. It shall not be permissible to duplicate this brochure in any form, either in whole or in part, without our written consent. Subject to technical alternations. Errors and omissions excepted 2025.