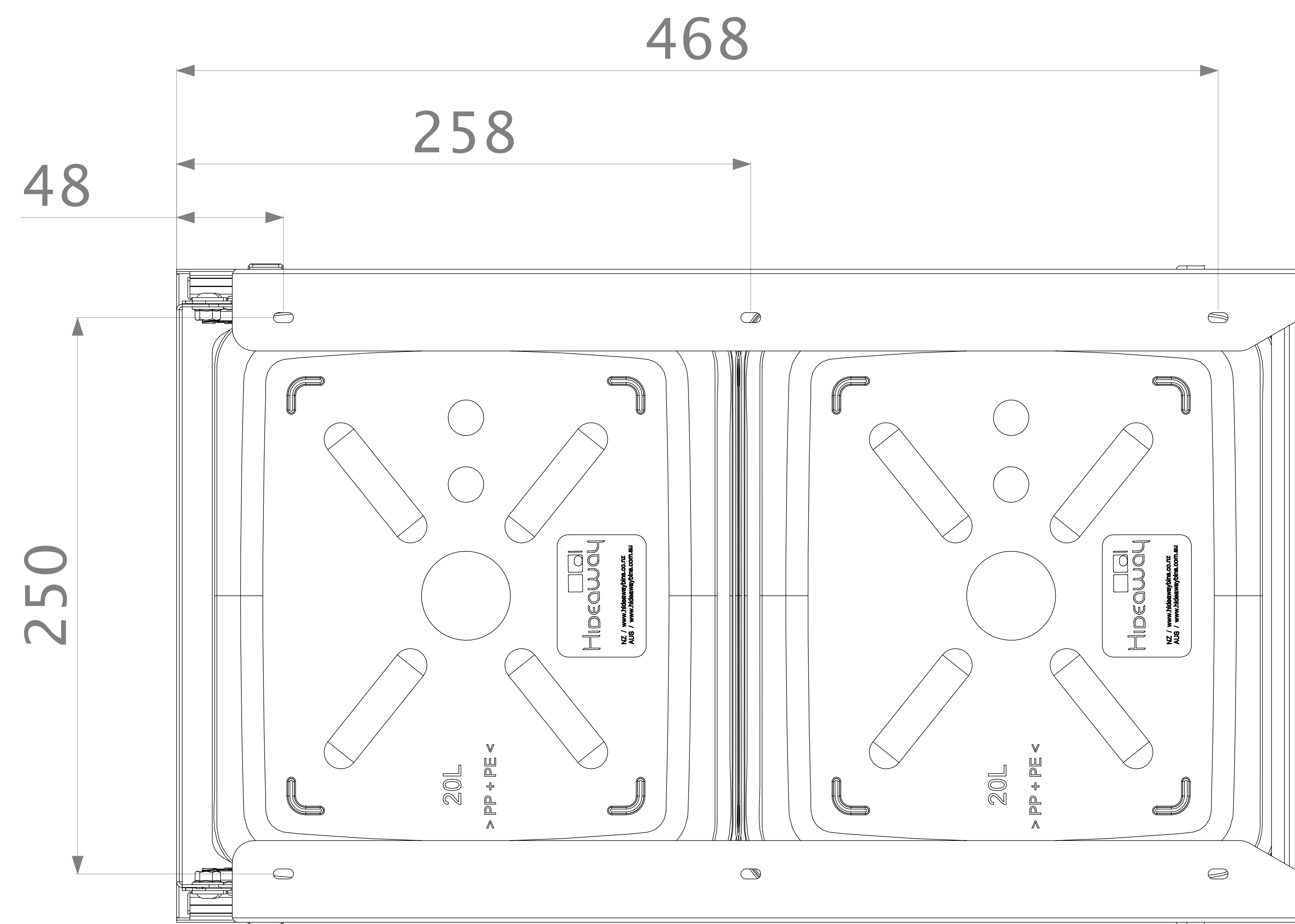
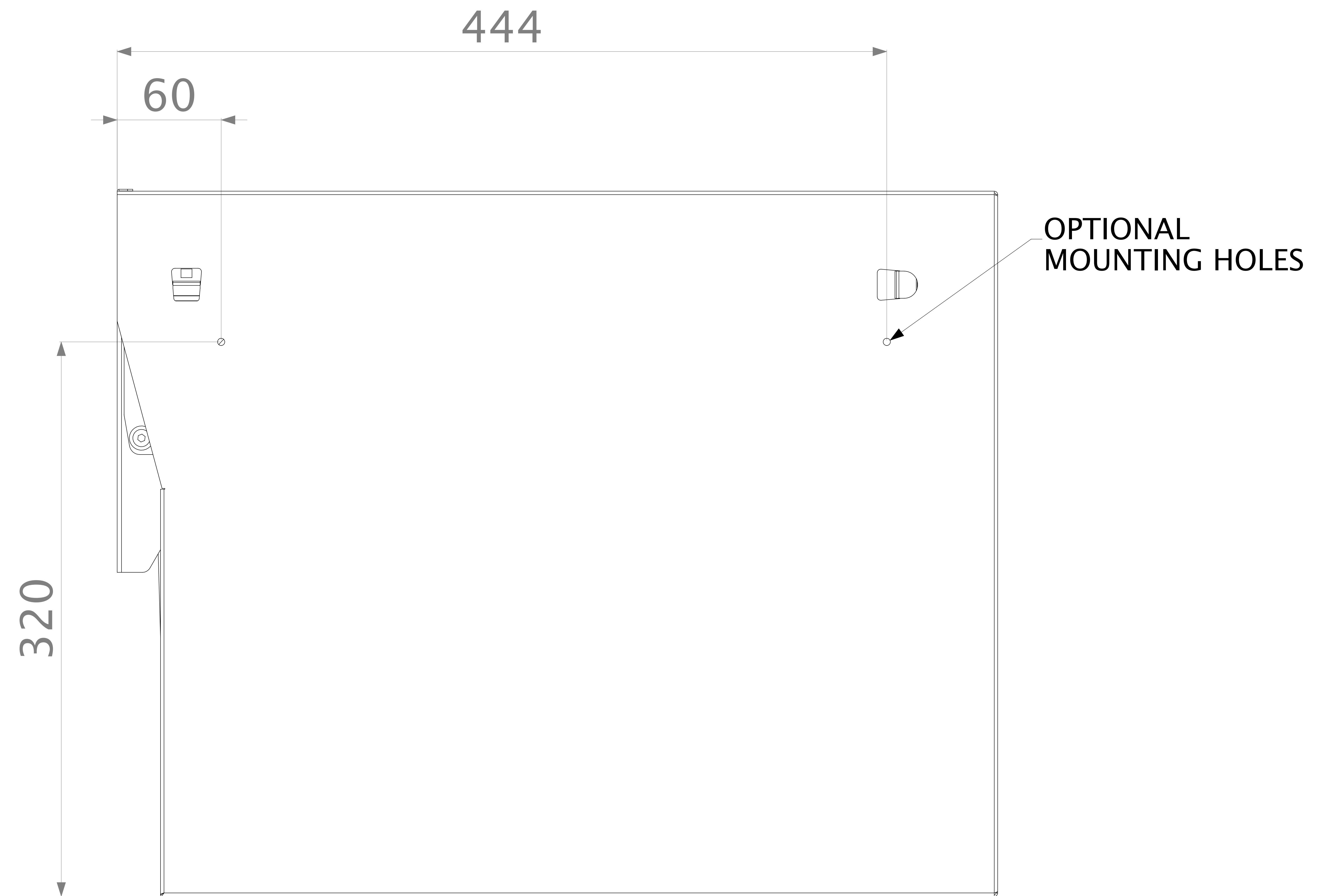
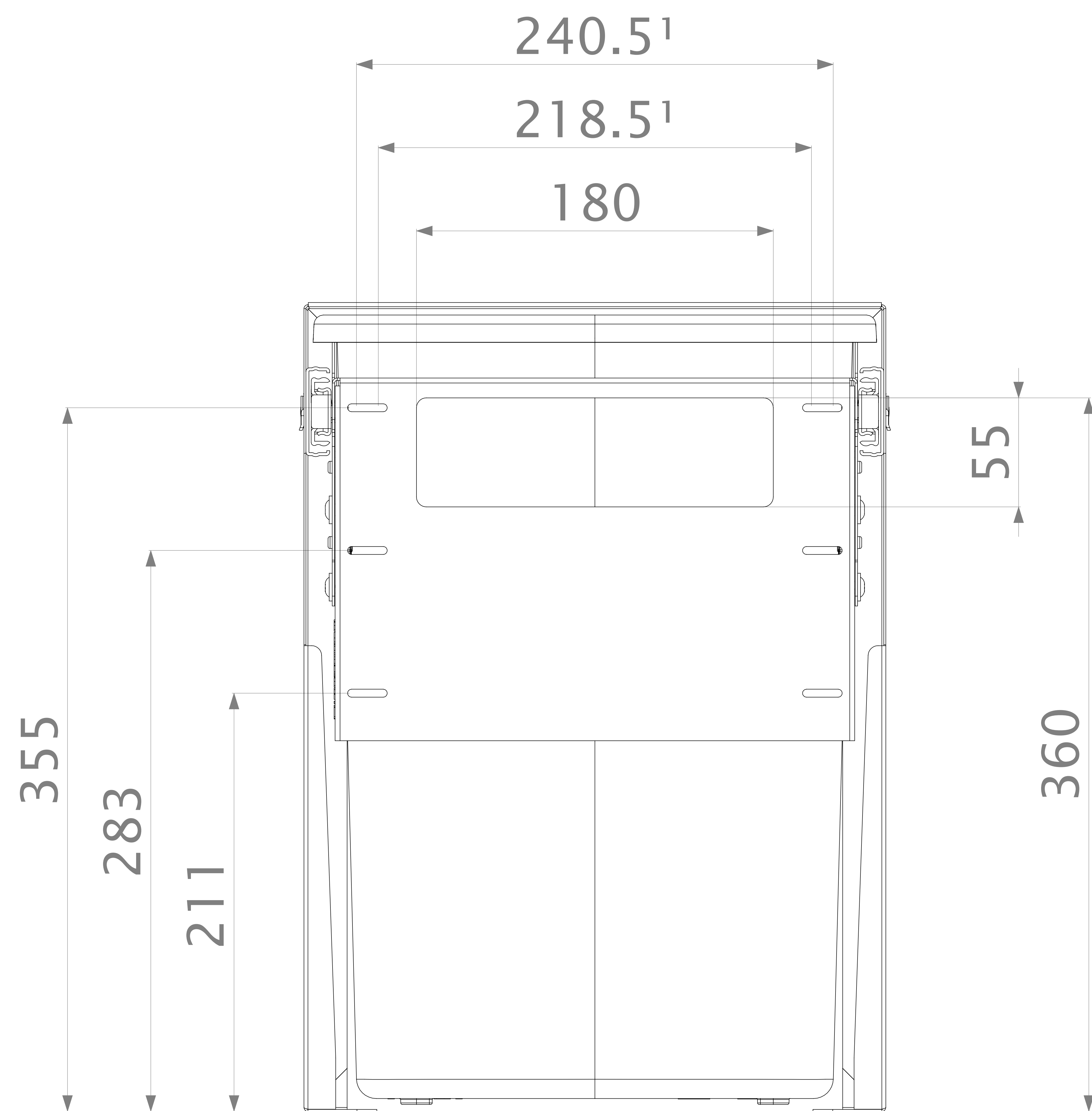



1. Thicker carcass material can be used with a corresponding increase in carcass outside width.
2. All dimensions in millimeters.
3. For illustration purposes only
4. Refer to hideawaybins.co.nz or hideawaybins.com.au for full and most up to date product details.
5. Copyright 2025, Kitchen King® Limited reserve the rights to these technical drawings under copyright law. All rights reserved in the event of the grant of a patent, utility model or design. Subject to technical alterations, errors and omissions excepted.
6. Door mounting will suit 50mm shaker door frame width when cabinet width is as shown.



1. Allows for ± 2.5 mm horizontal door adjustment
2.  2 x 10mm deep hole required for body mounting to the carcass using 16mm screws.
3.  2 x 10mm deep pilot holes required for door mounting using 13mm screws.

	DATE: 19/03/2025	SCALE: 1:1	INSTALLATION DRAWING – HCF220D	ISSUE:	
	PRODUCT DESCRIPTION:	HIDEAWAY COMPACT – 2 X 20L BUCKET – BASE MOUNT – DOOR PULL			02
	PAGE: 2 OF 2	DRAWING: DRILLING POSITIONS			